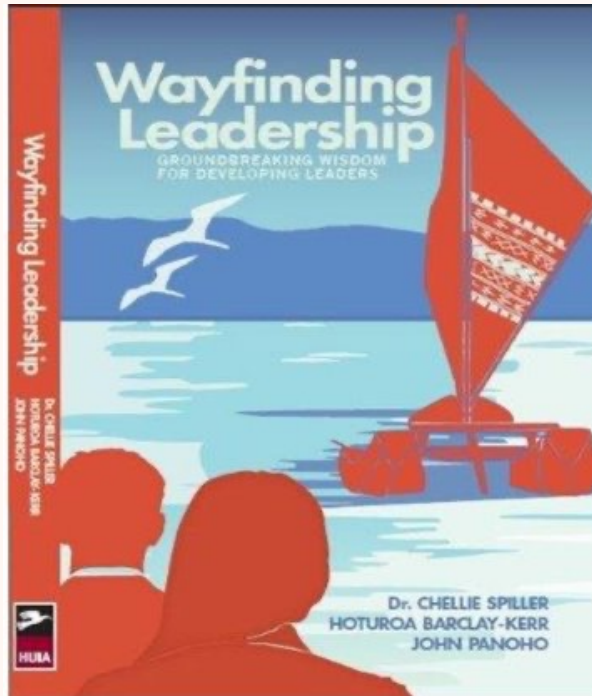


Wayfinding Leadership from a Pacific Experience

Examining the concept of leadership through a navigation lens



Examining



through a



Russell Sua
Susie Talimalo- Ikihele
Donna Southworth
Hear Our Story

Caroline Taripo-Keith
Tui Tuia | Learning Circle

Opening Prayer

Le Atua lo matou Tama

Fa'afetai mo lenei aso ua foa'i mai

Fa'afetai 'ia mafai ona matou feiloa'i i le manuia

Fa'amolemole faatasi mai i la matou mafutaga

Ma fa'amanuia mai matou fuafuaga uma

I lou suafa paia

Amene

God our father

Thank you for this day you have given us

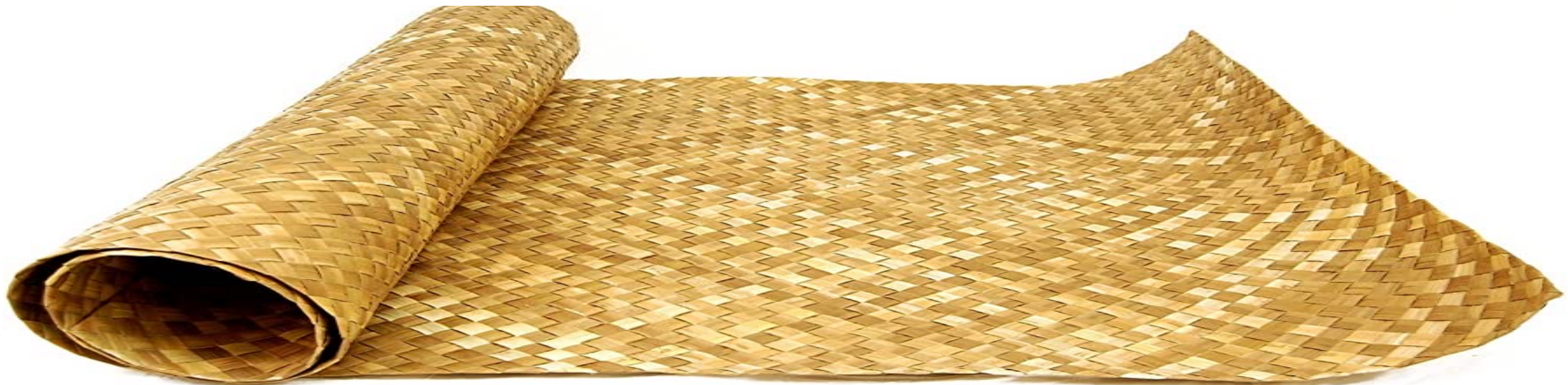
*Thank you that we have been able to meet in
positive/ happy circumstances*

*Please be with our gathering & bless all of our
plans/ intentions.*

In your holy name

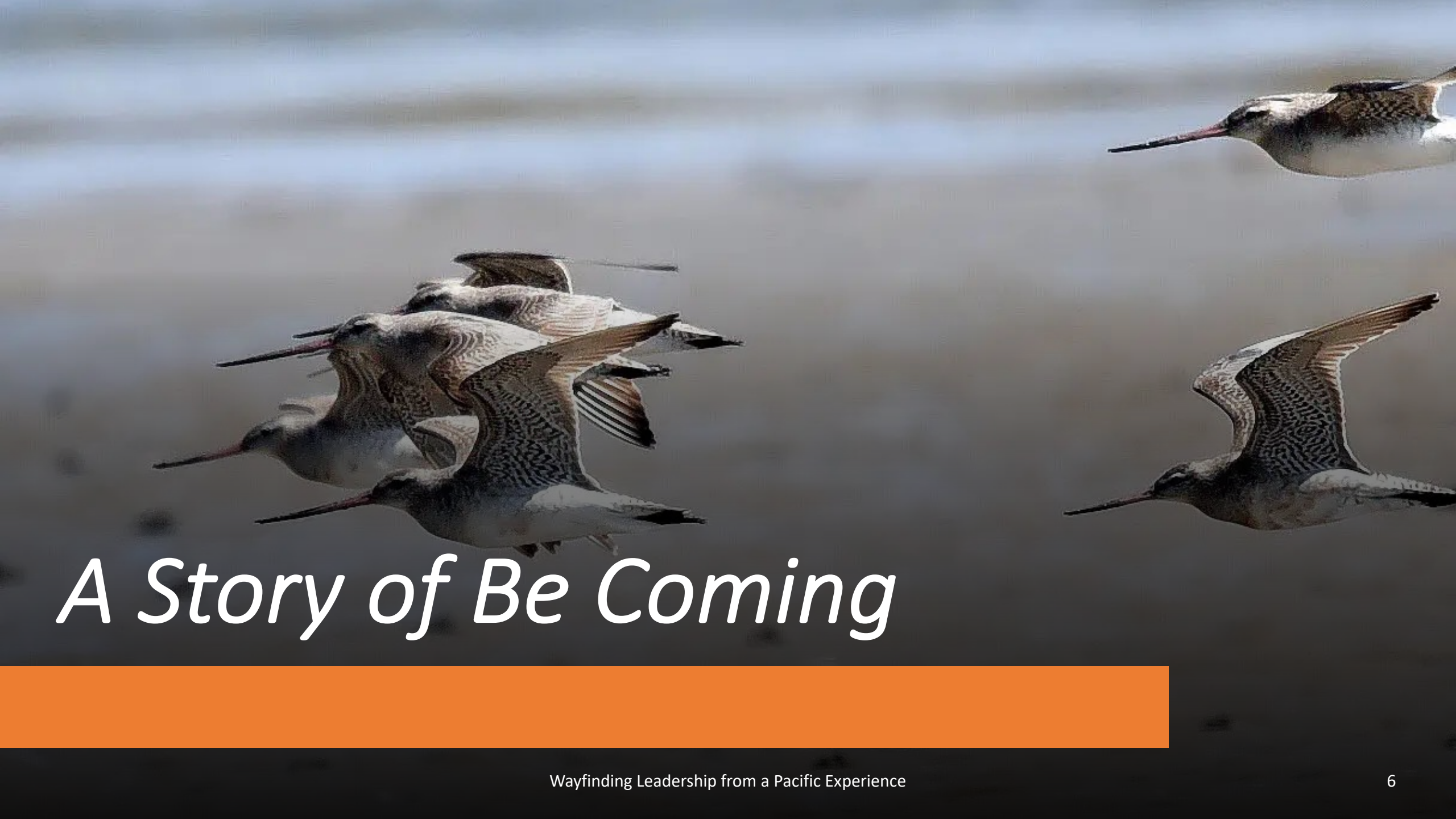
Amen

Fofola le fala
unfurl the mat so we may speak as family







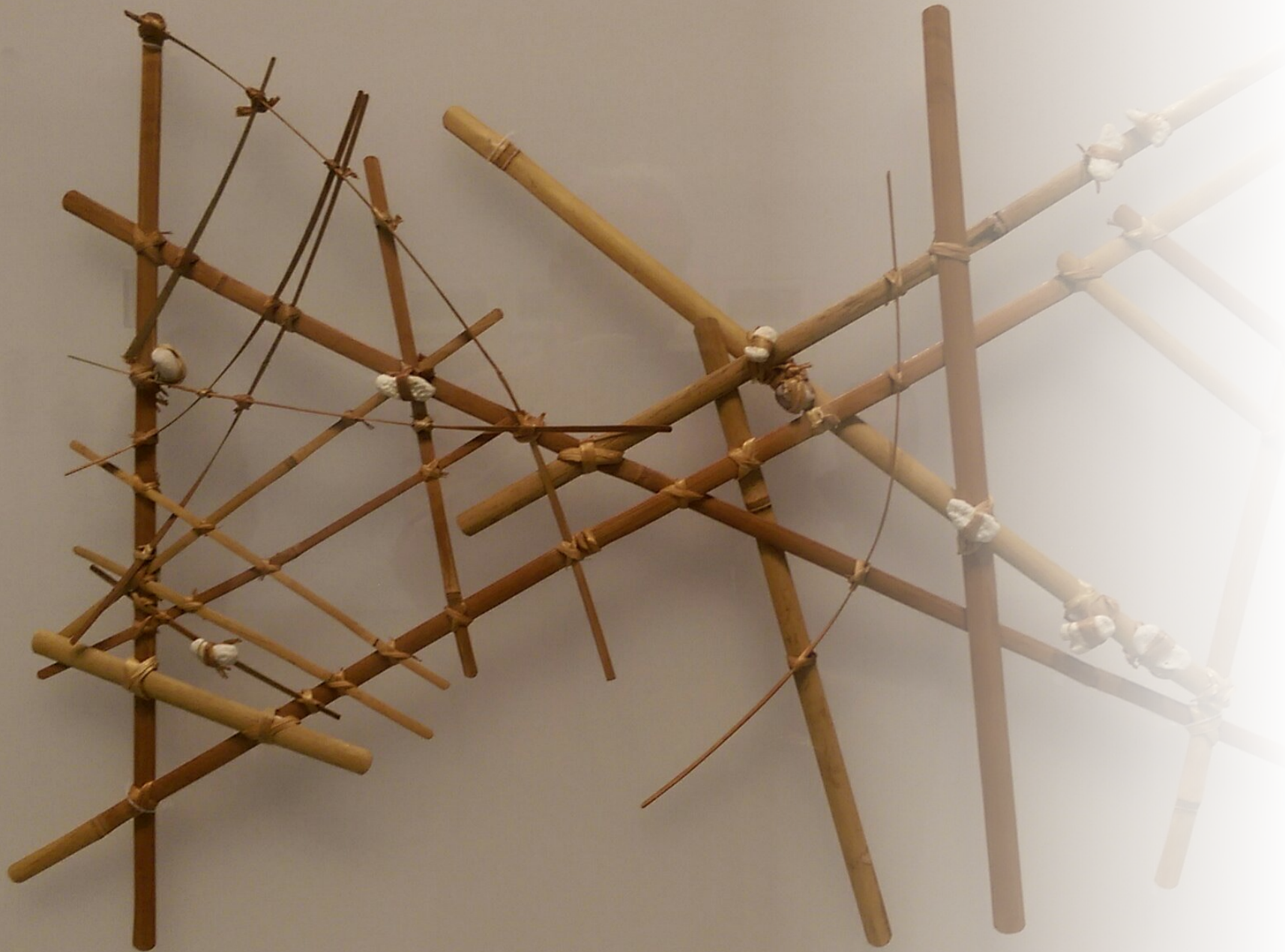


A Story of Be Coming



*Kopu
tangata*

My family



*Step into
your
Rangatira
space*



Call the Island to You

*“The true gift of wayfinding
is not arrival at a destination;
it is who we become along the way.”*

Embrace the Unknown



A story of What Ifs?



A story of Silence

*“Successful Wayfinding Leadership
requires that we develop response-
ability and avoid reactivity.”*

Wayfinding Leadership from a Pacific Experience

Wayfinding Leadership: Ground-breaking Wisdom for Developing
Buy the book from www.huia.co.nz/huia-bookshop or [bookshop/wa](http://bookshop.wa)

A story of Exploring and Discovering

*Wayfinding requires
that we become
'explorers of our world'
and set sail beyond the
compass of our existing
knowledge to traverse
uncharted waters in
ourselves and in the
world."*

Wayfinding Leadership: Ground-breaking Wisdom
Buy the book from www.huia.co.nz/huia-booksh

Wayfinding Leadership from a Pacific Experience



If I have courage, it is because I have
faith in the knowledge of my
ancestors.

— *Mau Piailug* —



Tui Tuia
Learning Circle

Pacific-led Education



Hear Our Story Limited

**Russell Su'a
Donna Southworth
Susie Talimalo-Ikihele**

Susie Talimalo Ikihele



Moments Of Awe

Talanoa – Getting Real and speaking from the heart in a café in Mangere

Wayfinder: Step in to your Rangatira space

(ie. lead in a mana enhancing way, stand with others, foster success is succession)

“Many organisations are on target with the plan but off-course with reality. They are using familiar but outdated markers. “

Moments Of Awe

Deciding on our Company name in a café in Mt Roskill: Hear Our Story Ltd

Wayfinder: Call the island to you

(ie. become your purpose, read the signs, move from stillness)

When a leader is committed to becoming a culturally responsive leader they generate relational trust and respect. This can't be accomplished in a distant, disembodied and abstract way – it's about being in the relationship. Being an open and willing learner and listener.

Moments Of Awe

Registering our company in a café in Henderson

Embrace the unknown

(ie. discover the opportunity in adversity, gather your grit, flow with change)

“leadership development journey that explores stepping into the unknown, developing sharper powers of observation, being more comfortable with uncertainty and finding new and better ways to tackle situations, relying not only on rational thinking, but also on the much broader sets of intelligence with which each of us is endowed.”

Ka pū ka hao comes from the whakatauki "Ka pū te ruha, ka hao te rangatahi" (as an old net withers, a new one is made). It acknowledges the importance of wisdom, leadership and guidance as well as the important energy and strength of youth coming through and leading in a different way.

