



ACE Aotearoa Statement of Intent 2018

Ngā whāinga

ADULT AND COMMUNITY EDUCATION
AOTEAROA INC (ACE AOTEAROA)

Adult and Community
Education



ADULT AND COMMUNITY EDUCATION AOTEAROA (INC)

'Kua tawhiti ko te haerenga mai, kia kore e haere tonu
He tino nui rawa ou mahi, kia kore e mahi nui tonu.'

'We have come far too far, not to go further
We have done too much, not to do more.'

Ta Hemi Henare, 1988.

Contents

Ngā kaupapa

4

Co-chairs' overview

5

Director's
introduction

6

ACE Aotearoa
functions

7

Strategic Plan
2016–2036

8

ACE Sector
outcomes model

11

Output class:
Advice,
communication
and liaison

12

Output class:
Development and
assurance

14

Output class:
Facilitating
collaboration

15

Output class:
Organisational
health and asset
management

17

ACE Aotearoa
budget 2018

Co-chairs' overview

E ngā maunga, E ngā awa, E ngā moana, E ngā waka, Tēnā kōtou kātoa.
Ka hūri ki ngā tini mate o te tau kua pāhuri, haere, haere, haere ki te pō,
e kōre e hōki mai. Kei te mihi, kei te tangi.
Ka hūri ki a tātou te hungaora, Mauri ora ki a kōutou

Tēnā kōutou

Tēnā kōutou

Tēnā tātou kātoa.

The ACE Aotearoa Board was refreshed through elections in 2017. We farewelled Gillian Brock and welcomed Tracey Shepherd from Wairarapa REAP who was subsequently elected as the co-chair, Tangata Tiriti. Tracey has a strong background in the ITO sector.

As co-chairs we have been pleased with the energy and drive of the Board. Our self review resulted in some new ways of doing things such as greater involvement from Board members at the Annual General Meeting and at our annual awards ceremony. As a Board we undertook the task of revising the constitution to better reflect the current activities of ACE Aotearoa.

There is regular oversight of the operations of ACE by the Policy, Strategic Communications and Finance and Audit Sub-Committees. In addition there are monthly telehui between the co-chairs and the Director.

Last year ACE Aotearoa contributed to government thinking through meetings with Ministers and the preparation of a Briefing to the Incoming Minister in November 2017.

We continue to work towards our end point of all providers being intentionally lead communities of learners. To achieve this we have focused on the revision of professional teaching standards for the ACE Sector.

A sector-led working group has been overseeing this process with strong connections to Ako Aotearoa. We continue to implement the ACE Place and ACE Trace tools for the sector. Government Officials from TEC and the Ministry of Education are becoming more interested in the use of this tool.

With the election of a new government in 2017 the strategic landscape has potential for change. One of the key deliverables for 2018 will be the negotiation of a new contract with the Tertiary Education Commission to replace that which expires July 2018.

We look forward to 2018 as another year of challenge and opportunity.

Kāti ake ngā pitopito korero mo tēnei wā. Noho ora mai.



Charissa Waerea
Co-chair



Tracey Shepherd
Co-chair

Director's introduction

This is the seventh year in which ACE Aotearoa has published a Statement of Intent. As in the previous six years, this sets out our key performance commitments for the forthcoming year, and provides a public statement against which we will report in 2019. The Statement of Intent and Annual Report have helped embed the practice of transparent accountability into our daily operations.

2018 is the third year of the current strategic plan. This plan reflects a mature organisation, clearly expressing what it wants to achieve and the strategies it will use, while again confirming the strong core values which have underpinned the work over the past five years. The direction and context developed by the Board in the strategic plan determine the focus of our operations, while building on previous success and learning.

One of those strategies is the revision of and implementation of professional teaching standards for the sector. This will be a clear standard for the teaching learners can expect and is an important foundation for the sector. To this end a sector wide working party has been set up and it is planned to implement a new set of standards later in 2018.

Our main tools – ACE Trace and ACE Place – continue to be well supported and numbers using the tools are growing. ACE Trace is a tool which measures the differences made for the learner participating in short, non-assessed ACE courses, and ACE Place is a cloud-based learner portal which provides learners and potential learners with information about courses and services in their location. The tool has a dedicated space to keep their “learning portfolio” so they can access it into the future, and members’ spaces to share information and experience with other learners.

We have been particularly pleased with the uptake of ACE Place with large numbers of providers using the tool to share information about the courses that they have available for learners.

The Professional Development Grants Fund was well supported last year and we will continue to promote it. The goal of the fund is to ensure new ideas and best practice are shared across the sector. We will also continue to strengthen our links with international Adult and Community organisations such as Asia South Pacific Association for Basic and Adult Education (ASPBAE), and Adult Learning Australia (ALA) and continue to develop links with the International Association of Adult Education, which ACE Aotearoa joined last year.

In 2018 we will provide professional development and networking opportunities through: the Hui Fono, ACE Sector Conference and Festival of Adult Learning Ahurei Ākonga. The Hui Fono will celebrate its eleventh year in 2018.

During the coming year we will continue to support the sector through the Strategic Alliance which advocates for the sector by the sector. Members of the Alliance are drawn from a number of provider organisations.

That is the context in which we are presenting the Statement of Intent 2018. It will be a year of focus on the future.



Colin McGregor
Director



ACE Aotearoa functions

What we do

We promote the value and role of Adult and Community Education in transforming communities and we celebrate learner success;

We provide strategic policy and operational advice to Central and Local Government;

We facilitate professional development and quality standards for the sector, building a high quality self-reliant network of learner focused organisations and practitioners;

We provide resources to support improving learner outcomes through electronic and print media, and are the communication hub for the sector;

We provide advice, support and resources to ACE organisations and to adult learners to improve adult learner outcomes;

We provide national infrastructure and a neutral clearing house for sector issues;

We provide an Aotearoa/New Zealand voice at international forums on adult education.

What we achieve

Robust adult education networks focused on improving learner outcomes and creating communities of learners;

Increased collaborative partnerships in support of whānau and adult learning;

Increased capability and capacity of practitioners, organisations and communities with more effective ACE services;

Active, well informed, learner focused ACE practitioners;

Public and community awareness of the value of adult and inter-generational learning.

Strategic Plan 2016–2036

What you will see when we have achieved the result

Confident and prosperous whānau and communities;

Robust large networks, longitudinal research, gatherings
of the young and sassy with the old and wise;

People coming together in structured ways to create
learning communities and directing resources there;

Ever increasing investment in the sector, more providers,
increased membership and participation;

Greater connectedness between the four pillars
of education, health, housing and employment,
and between groups delivering in the community.

Our strategies

Research and Policy to inform Government and communities;

Regional and national forums of learners;

Tools for providers to engage and support learners;

Inter-generational sharing of knowledge;

Robust and sustainable leadership focused organisation.



Our kaupapa

Toi Ariki

Expression of sovereignty (leadership);

Toi Urutapu

Sacred spaces;

Toi Ururangi

Spirit world, wairua;

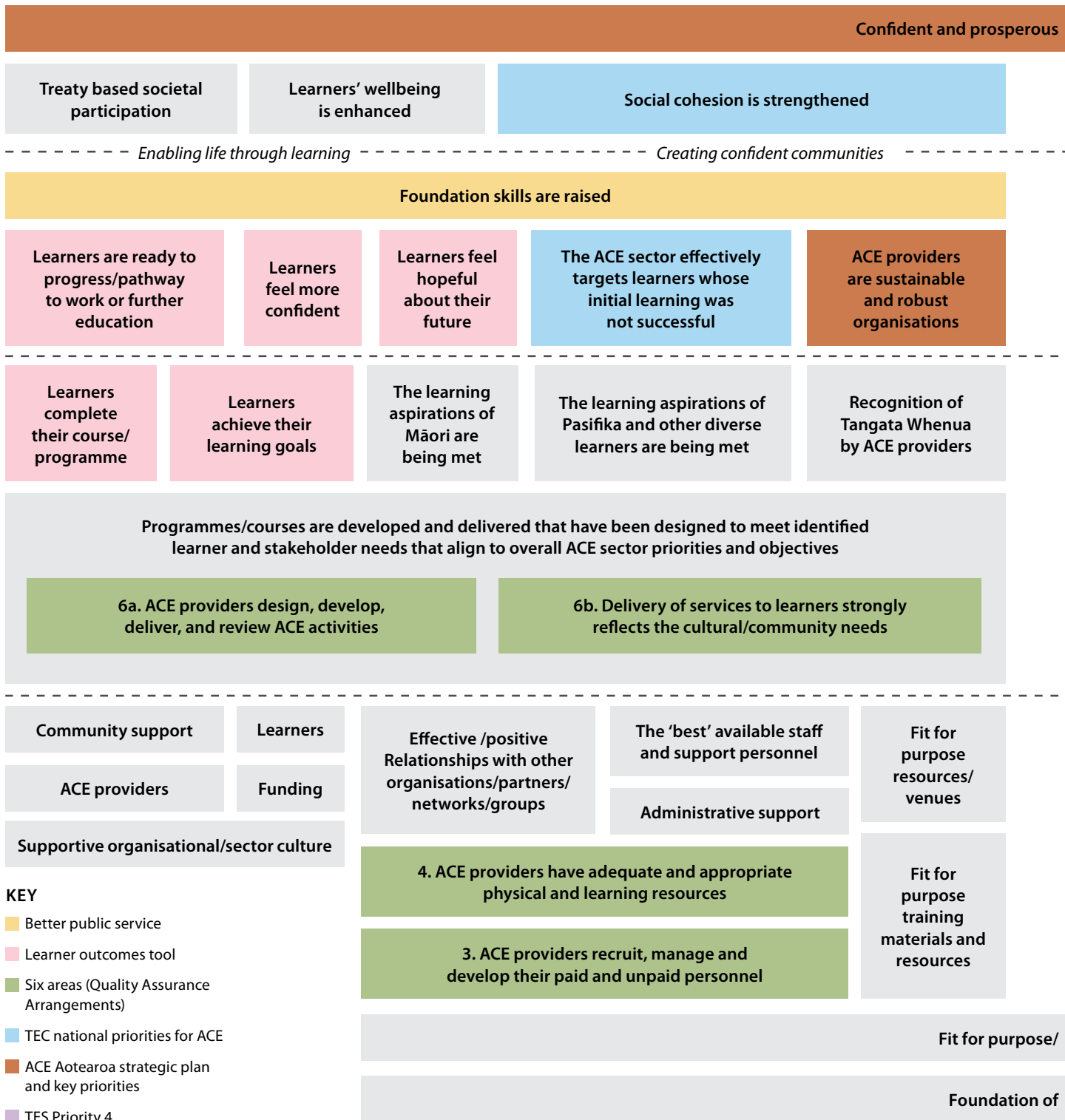
Toi Ururoa

Looking forward.

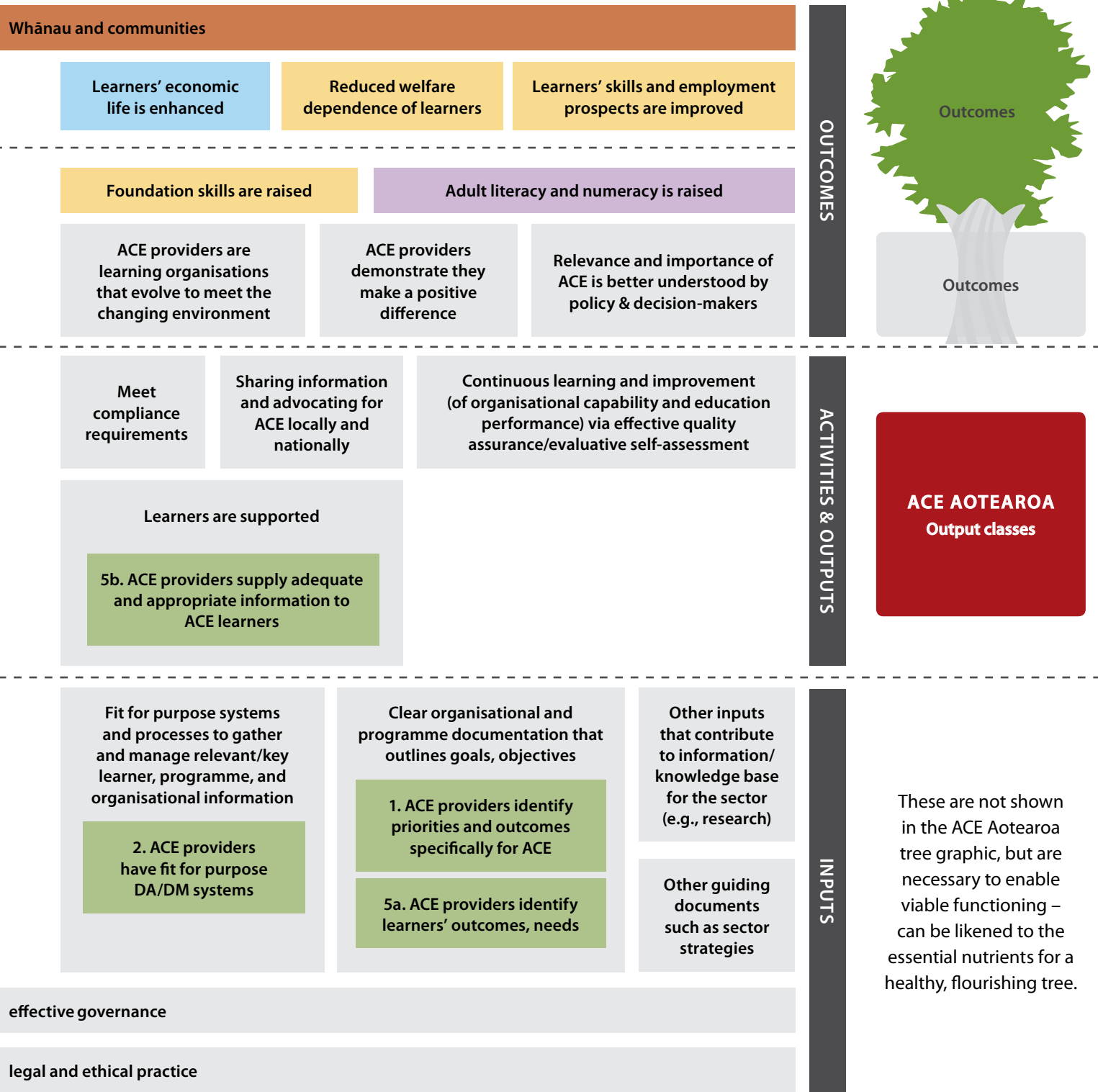


How ACE Aotearoa overview fits with the ACE Sector outcomes model

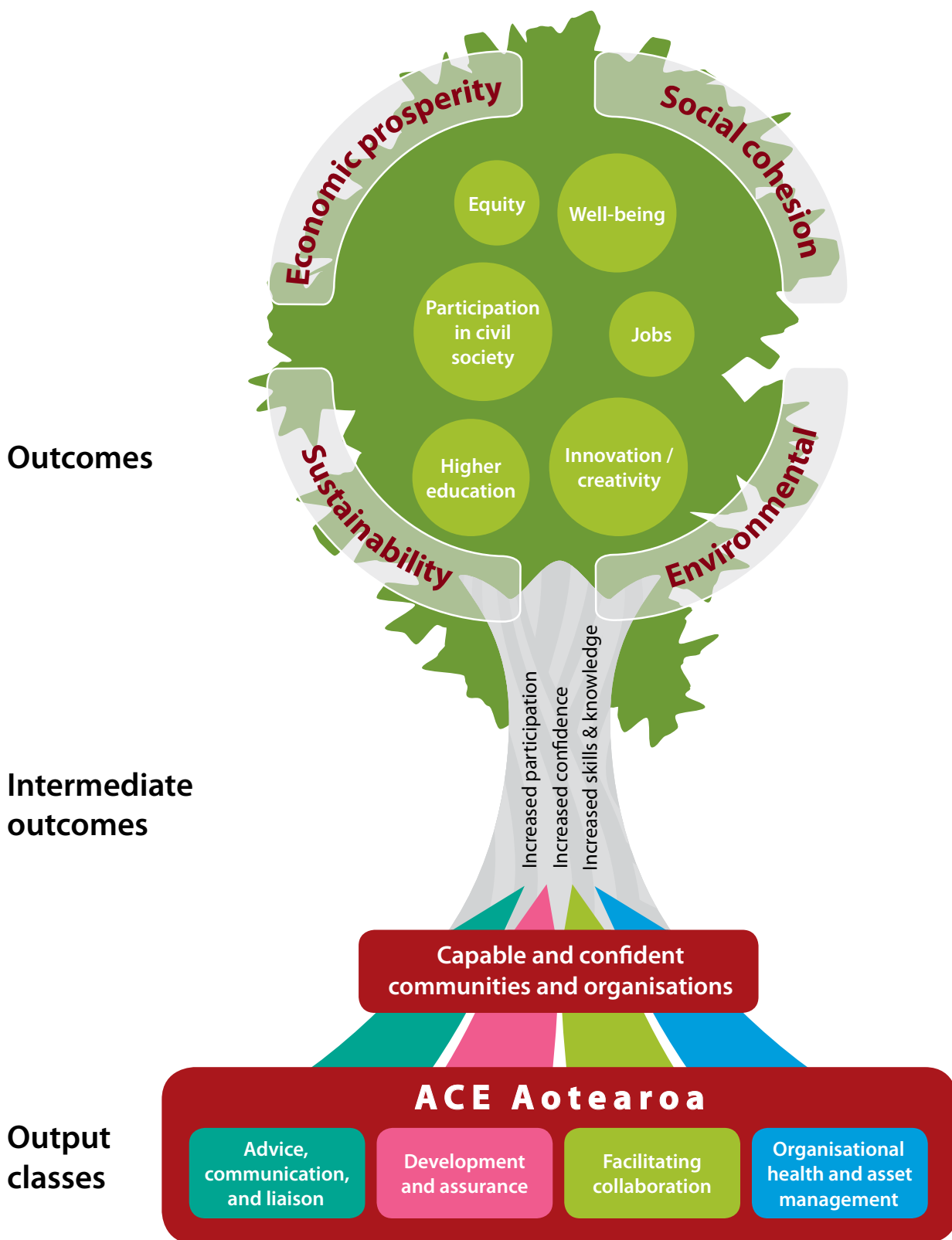
ACE SECTOR OUTCOMES MODEL



The ACE Sector Outcomes Model was developed by ACE Sector representatives working with Kara Scally-Irvine from Evaluation Consult during 2015 (as part of reviewing and



updating our quality assurance/ external evaluation and review (QA/EER) processes.



Kia Tu Kahikatea!

The image of the Kahikatea tree (depicted in the diagram) is used on many occasions in the ACE Sector. Kahikatea forests grow on frequently flooded, swampy ground. To survive the flooding, the roots of these trees are inter-twined for support so the trees are not easily pushed over. The image is appropriate for the ACE Sector in which support and working together for the greater good are highly valued.

OUTPUT CLASS

Advice, communication and liaison

Funding source: Crown

Event/project	Key indicator of success	Key outcome sought
Celebrate learner success	<ul style="list-style-type: none">- Festival of Adult Learning Ahurei Ākongā participation numbers and diversity of activity- Festival participation 2017: 4,000; 2018 target: 4,500- Effective communication mechanisms about learner success	Value of ACE to whānau, communities, society and economy recognised
Provide resources to support improving ACE learner outcomes	<ul style="list-style-type: none">- Create learner focused digital communication strategy with learner outcomes as the focus and where all adult learning services can be found with easy automated navigation functionality- Website regular traffic currently 1,000; target usage: 1,100- Twitter 2017 at 564; 2018 target: 580- Facebook Likes currently 800; 2018 target: 850- Enews distribution currently 1,100; 2018 target: 1,300- Newsletter distribution currently 745; 2018 target: 755	Ready access to reliable and accurate information on ACE matters
Provide services to support improving ACE learner outcomes	<ul style="list-style-type: none">- Identification and clarification of issues to inform policy discussions, and/or address gaps in existing ACE service provision with a focus on improving ACE learner outcomes- Feedback from sector on proposals to make submissions or raise issues- Issues identified, solutions proposed or trialled	ACE learner access to fit for purpose services is facilitated Proactive issue resolution with effective solutions

OUTPUT CLASS

Development and assurance

Funding source: Crown

National events	Key indicator of success	Key outcome sought
Hui Fono	<ul style="list-style-type: none">- Number of Māori participants- Number of Pasifika participants- Participant evaluation- Total participants attending 2017: 120; 2018 target: 120	Improved ability to deliver effective services to Māori and Pasifika ACE learners
ACE Sector Conference	<ul style="list-style-type: none">- Increased diversity of participants- Quality of keynote speakers- Total participants attending 2017: 100; 2018 target: 110	Provider services adapted/improved learner focus after learning from the conference
Professional development grants	Key indicator of success	Key outcome sought
Application rounds	<ul style="list-style-type: none">- Number of applications- Quality of applications	Effective targeting of available resource to high impact initiatives
Professional development services	Key indicator of success	Key outcome sought
Workshops and focussed support	<ul style="list-style-type: none">- Numbers of participants in workshops and getting focussed support- Range of topics and locations- Feedback from participants	Increased practitioner capability resulting in improved learner outcomes

National projects	Key indicator of success	Key outcome sought
Provide national infrastructure and a neutral clearing house for sector issues	- Information sharing/ collaboration with global adult education community	Community driven solutions to local learning/issue resolution needs. Well informed ACE participants making sustainable decisions
ACE Learner Outcomes	- Number of learners enrolled on/ providers using the ACE Learner Outcomes database	Value of ACE to society and economy being recognised
ACE Learner Portal (ACE Place)	- ACE Place system implemented - Number of learners/providers using system	ACE learners have dedicated system to assist them manage their learning
ACE Sector Standards	- Standards revised	Consistent services available to ACE learners nation-wide
Quality assurance and external evaluation and review	- Feedback on use of system - Review of tool if required	Integrated management/service system available sector wide
Further development of Learner Pathways system	- Formally link pathways to ACE Place, outcomes measure and QA/EER system	ACE Learners recognised as integral part of the tertiary sector

Funding source: Other

Regional	Indicators	Key outcomes
Facilitating Pasifika community organisations to make funding applications	- 20 organisations per year - Quality of applications	Pasifika community organisations have access to philanthropic funding for community needs

OUTPUT CLASS

Facilitating collaboration

Funding source: Other

ACE Aotearoa self-funds the promotion and facilitation of collaboration within and across sectors to better support whānau, inter-generational and adult learners, and the building of communities of learners.

Collaborative activities	Key indicator of success	Key outcome sought
Appropriate and effective support to providers	- Feedback from providers/ applicants	Effective targeting of available resource to improve learner outcomes
Facilitating collaborative activities within and across sectors for the benefit of whānau and adult learners	- Support to the concept of Learning Cities through CORE Education Conference	Integrating adult learning into community development in New Zealand cities
Provide an Aotearoa/New Zealand voice at international forums	- Participation in ASPBAE and other international forums - Create and foster international connections - Create diversification and international linkages for ACE Conferences	Contribution to international initiatives on adult learning

OUTPUT CLASS

Organisational health and asset management

Funding source: Other

Event/project	Key indicator of success	Key outcome sought
Annual general meeting	<ul style="list-style-type: none">- Participation by members- Feedback from members	Mandate for ongoing work
Organisational health	<ul style="list-style-type: none">- Feedback from members on quality of services- Existence of products and supplies for members- Independent verification of transparent accountabilities and robust financial and performance management systems- Relevant, meaningful up-to-date constitution	Sustainable national body for ACE sector
Maintenance and management of ACE House	<ul style="list-style-type: none">- ACE House retains value and is available for sector use	ACE sector maintains key asset
Effective stakeholder engagement	<ul style="list-style-type: none">- Constructive relationships with political, business and community leaders	Improved understanding of value of ACE
Membership services	<ul style="list-style-type: none">- Feedback from members	Maintain the value proposition of membership Deliver resources and tools that add value in services for ACE learners
Administration services	<ul style="list-style-type: none">- Standard operating procedures updated and in place. Updated electronic distribution system	Robust systems in place

Event/project	Key indicator of success	Key outcome sought
Board support	- Quality and timeliness of documentation, relationship between Board and Operations	Positive feedback from Board
Financial management	- Positive feedback from Auditors, accuracy of reports and timeliness of payments, positive feedback from Finance Audit and Risk sub-committee	Strong financial performance
Technology services	- Electronic systems work well	Organisation performs without IT issues

ACE Aotearoa budget 2018

	Ace Pool (AP)	Professional Development (PD)	Ace Aotearoa (AA)	Foundation North	Collaborative Activities Project (CAP)	Total
Income						
Foundation North donation	0	0	0	100,000	0	100,000
Event registrations – members	0	7,980	0	0	0	7,980
Event registrations – non Members	0	7,540	0	0	0	7,540
Membership fees	0	0	5,250	0	0	5,250
Interest income	0	0	3,600	0	0	3,600
Revenue from providing services	365,500	1,100,000	288,067	0	39,707	1,793,274
Other income	5,000	8,000	72,264	0	0	85,264
Total income	370,500	1,123,520	369,181	100,000	39,707	2,002,908
Expenses						
Employee related costs	138,723	211,466	79,516	75,984	0	505,689
Costs related to providing services	168,628	601,394	0	23,700	8,140	801,862
Grants made	40,000	270,000	0	0	0	310,000
Other expenses	0	13,273	180,815	0	0	194,088
Total expenses	347,351	1,096,133	260,331	99,684	8,140	1,811,639
Surplus/(deficit)	23,149	27,387	108,850	316	31,567	191,269
Carry forward surplus to 2019	23,149	27,387	0	316	31,567	82,419
Surplus/(deficit)	0	0	108,850	0	0	108,850





Phone

64 4 473 6625

Fax

64 4 499 4947

Email

admin@aceaotearoa.org.nz

www.aceaotearoa.org.nz

192 Tinakori Rd, Thorndon, Wellington 6011
PO Box 12 114, Wellington 6144
Aotearoa New Zealand

Adult and Community
Education

